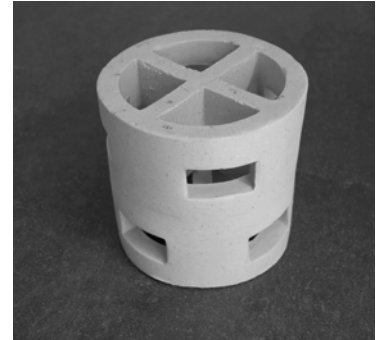


Raflux-Rings 50-5 Ceramics

Physical data

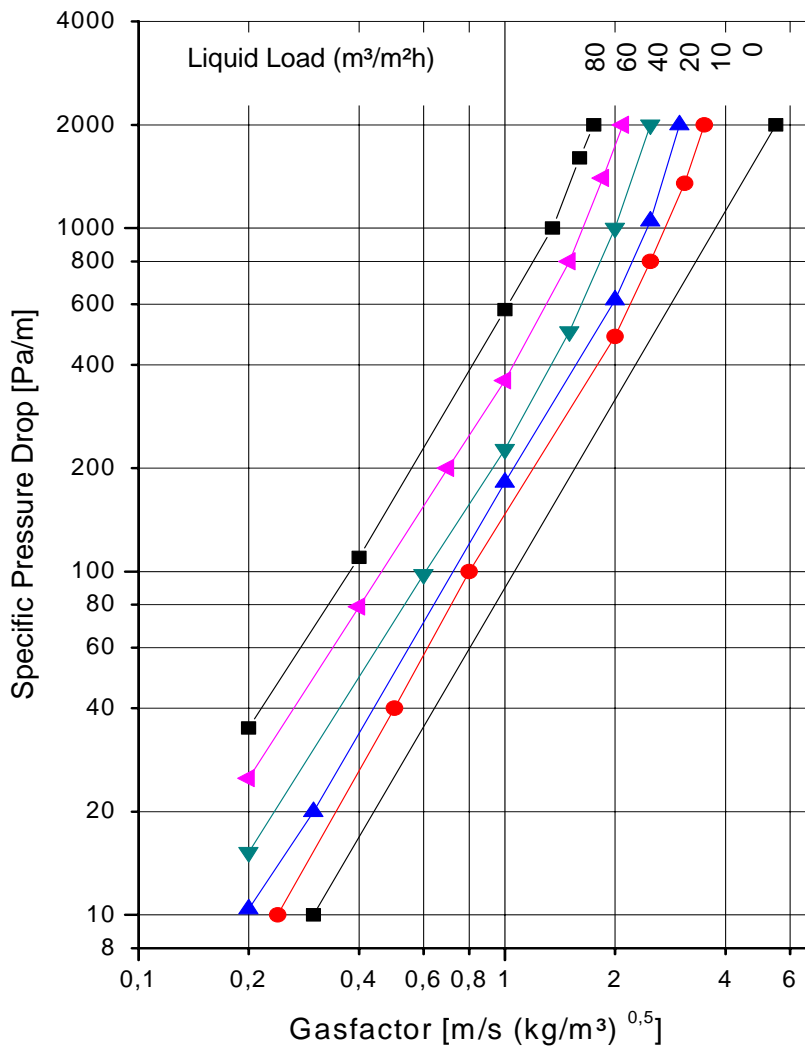
Nominal size	50 mm
Weight	550 kg/m ³
Surface area	120 m ² /m ³
Void fraction	77 %
Material	stoneware

Available material
porcelain and others on request



Pressure drop

Air / Water 20 °C, 1 bar



KE223 02.05.06

The values indicated above apply for a ratio of diameter of vessel to tower packings of D/d = 20.

All information presented herein is believed to be accurate and reliable but does not constitute a warranty or performance guarantee on part of RVT PE GmbH.